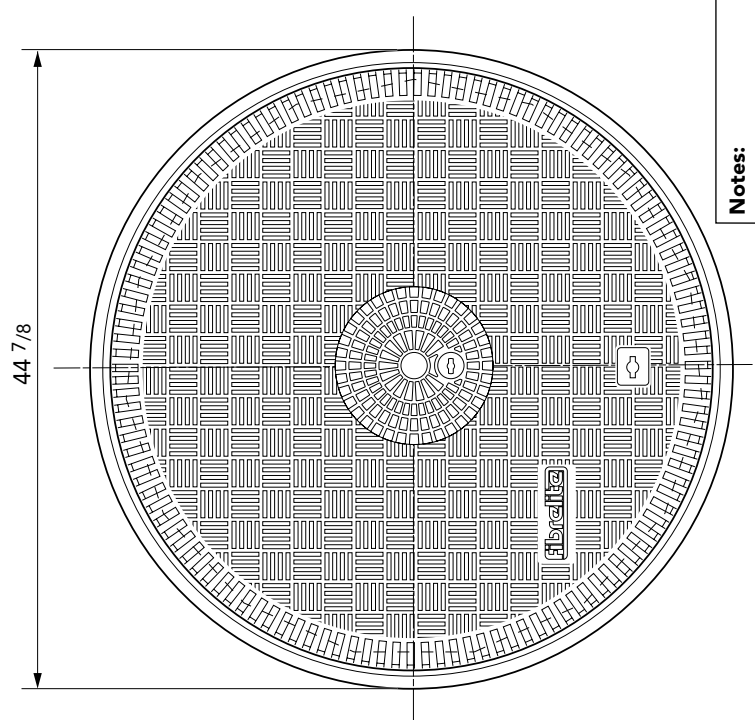
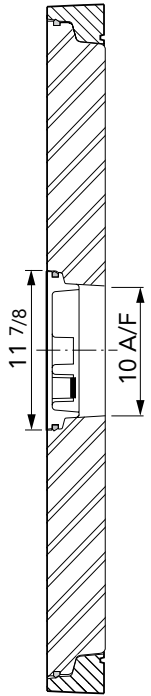
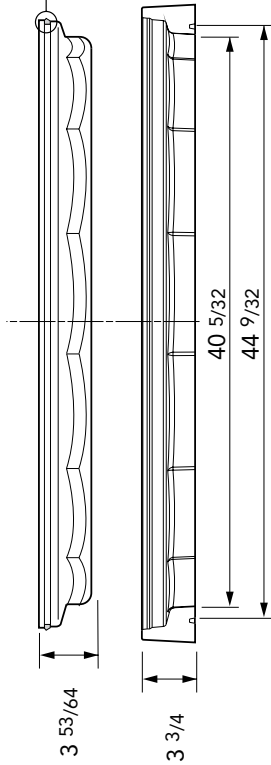


Notes:	Category: ACCESS COVER AND FRAME	
	Product Description: 40" dia. Watertight flat sealed composite cover and frame, with removable central fill cap (10" dia.)	
For reference purposes only. This drawing is not a specification.	Drawing No.: US13422	Product Code: FL100/CF
	Date: October 2006	Revisions:

standard plus



Category: **ACCESS COVER AND FRAME**

Product Description: 40" dia. Watertight flat sealed composite cover and frame, with removable central fill cap (10" dia.)

Drawing No.: **US13423** Product Code: **FL100/CF**

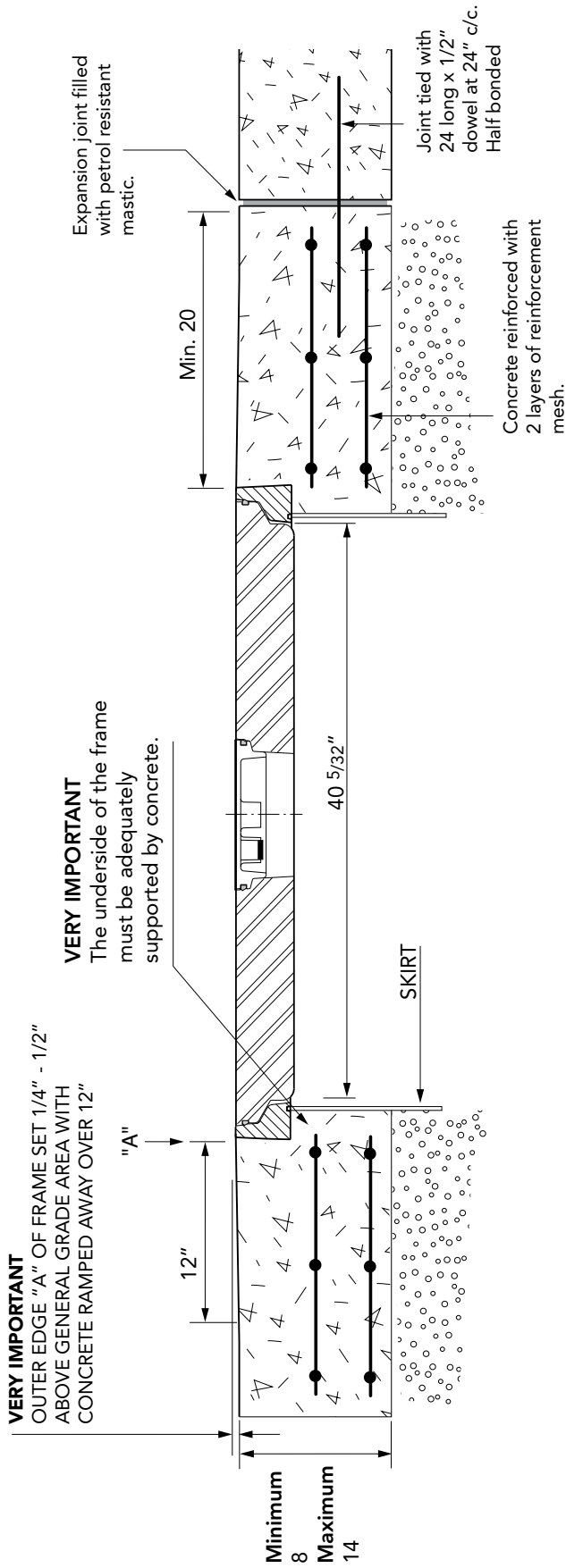
Date: **October 2006** Revisions:

Notes:

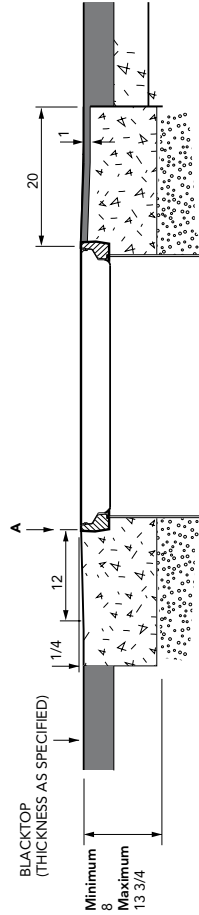
For reference purposes only.
 This drawing is not a specification.



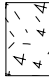


CONCRETE



BLACKTOP



-  BLACKTOP
-  PEA GRAVEL
-  CONCRETE

Notes:

For reference purposes only.
 This drawing is not a specification.

Category: **ACCESS COVER AND FRAME**

Product Description: 40" dia. Watertight flat sealed composite cover and frame, with removable central fill cap (10" dia.)

Drawing No.: **US13424** Product Code: **FL100/CF**

Date: **October 2006** Revisions:

