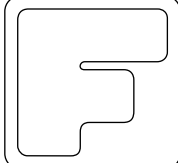
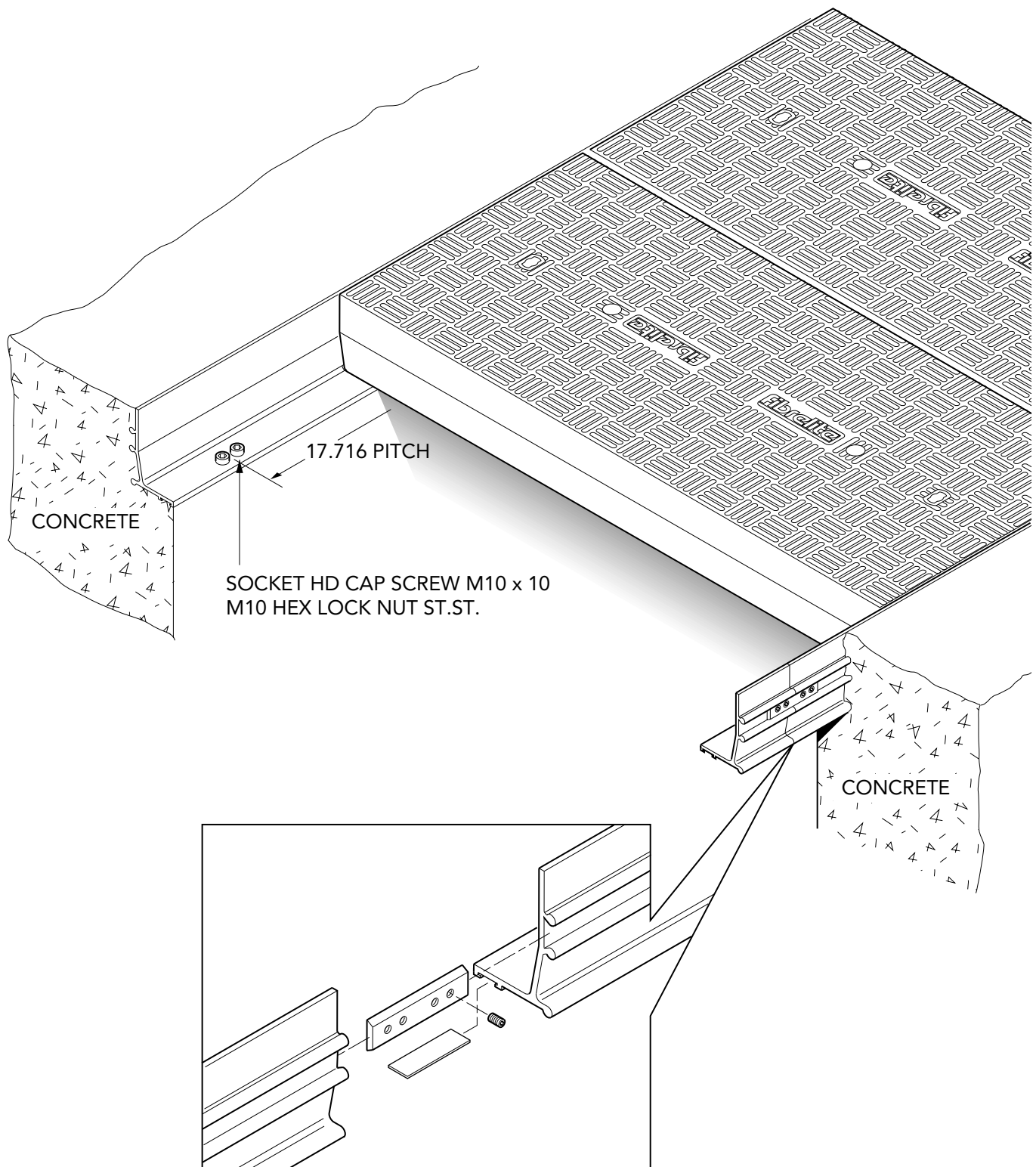
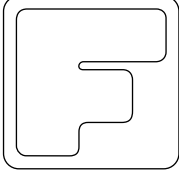
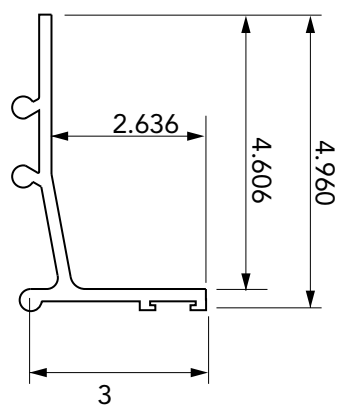
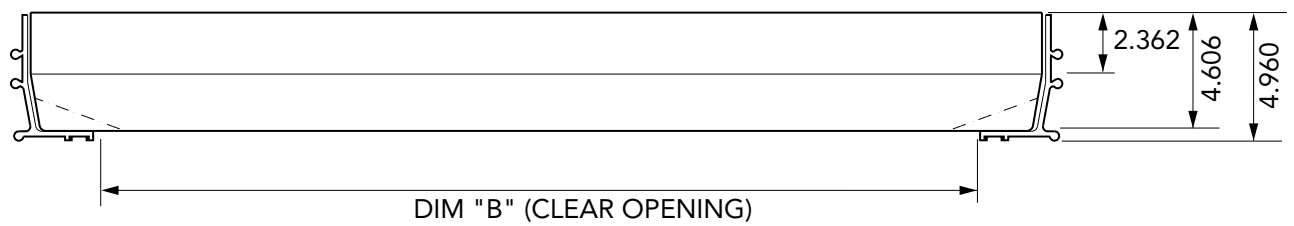
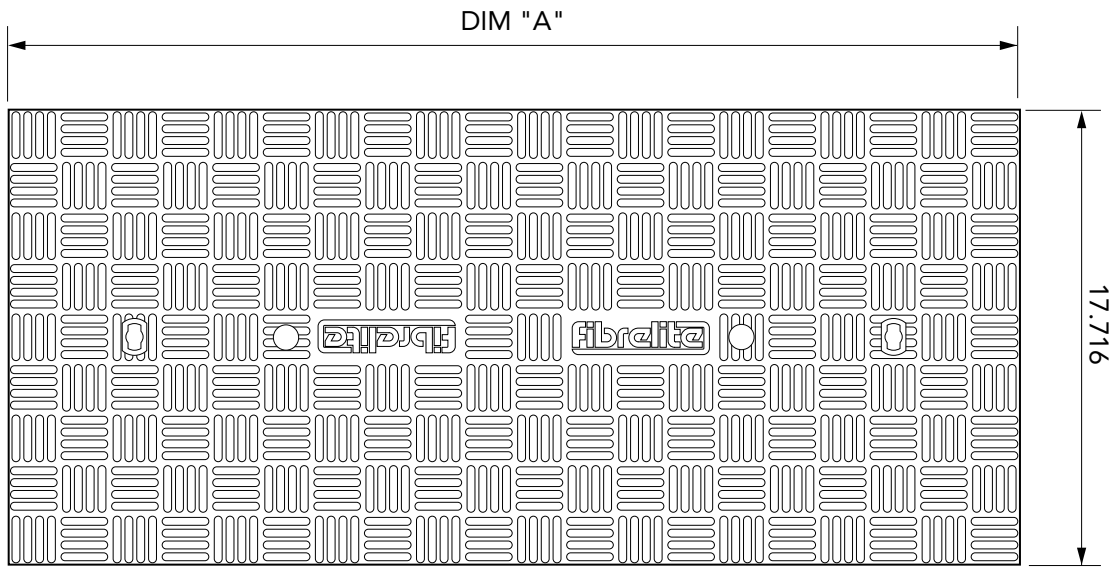


<b>Notes:</b>	Category: <b>MULTI COVER</b>		
	Product Description: <b>Composite panel for trench / ducts</b>		
For reference purposes only. This drawing is not a specification.	Drawing No: <b>US16001</b>	Product Code: <b>FM45</b>	<b>FIBRELITE</b>
	Date: <b>Sept 2000</b>	Revisions: <b>0</b>	

To enable continuous improvement of our products, the designs and specifications are subject to change without notice.  
 Order against product code only.



<b>Notes:</b>	Category: <b>MULTI COVER</b>	
	Product Description: <b>Composite panel for trench / ducts</b>	
For reference purposes only. This drawing is not a specification.	Drawing No: <b>US16002</b>	Product Code: <b>FM45</b>
	Date: <b>Sept 2000</b>	Revisions: <b>0</b>
		<b>FIBRELITE</b>



STANDARD DIM "A"	SPECIAL DIM "A"	SPAN (CLEAR OPENING) DIM "B"
<b>31.50</b>		26.378
	33.464	28.346
	35.433	30.315
	37.401	32.283
<b>39.375</b>		34.252
	41.338	36.220
	43.307	38.189
	45.275	40.157
<b>47.25</b>		42.125
	49.212	44.094
	51.181	46.063
	53.149	48.031
<b>55.125</b>		50.00
	57.086	51.968
	59.055	53.937
	61.023	55.905
<b>63</b>		57.874

**ALL MEASUREMENTS IN INCHES**

**Notes:**

For reference purposes only.  
 This drawing is not a specification.

Category: **MULTI COVER**

Product Description: **Composite panel for trench / ducts**

Drawing No: **US16003**      Product Code: **FM45**

Date: **Sept 2000**      Revisions: **0**

