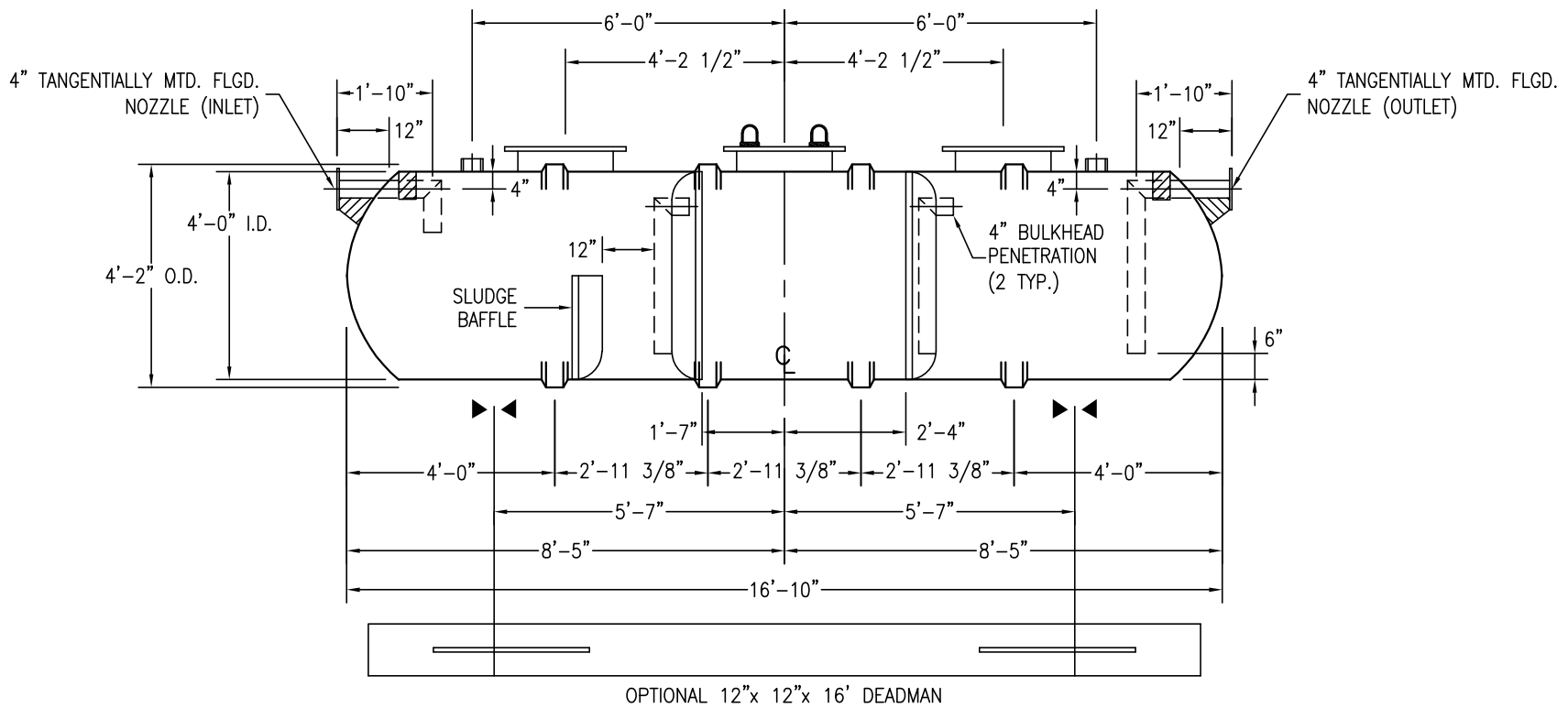
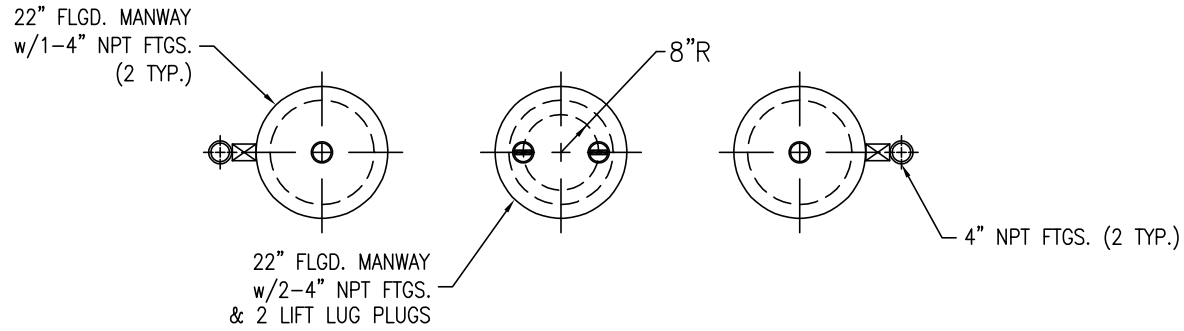


NOTE: CUSTOMER SUPPLIED FLEXIBLE PIPING COUPLING REQUIRED ON TANGENTIALLY MTD. NOZZLES, STUB-OUTS & NPT FITTINGS.



NOTES:

- ☒ HOLD DOWN STRAP CLIP
- ▶◀ HOLD DOWN STRAP LOCATION
- TYPE "13" LIFT LUG - SD
- TYPE "13" LIFT LUG - HD

SWT (4')-1500 (RECLAIM)		DATE:	10/17/05
RYCO CAR WASH SYSTEMS		DRAWN BY:	K.A.SOEDER
	CAPACITY: SLUDGE/TOTAL	REVISED:	
	45/1514	DWG NUMBER:	41V-3BSW
	WEIGHT: DRY/WET		
	800		