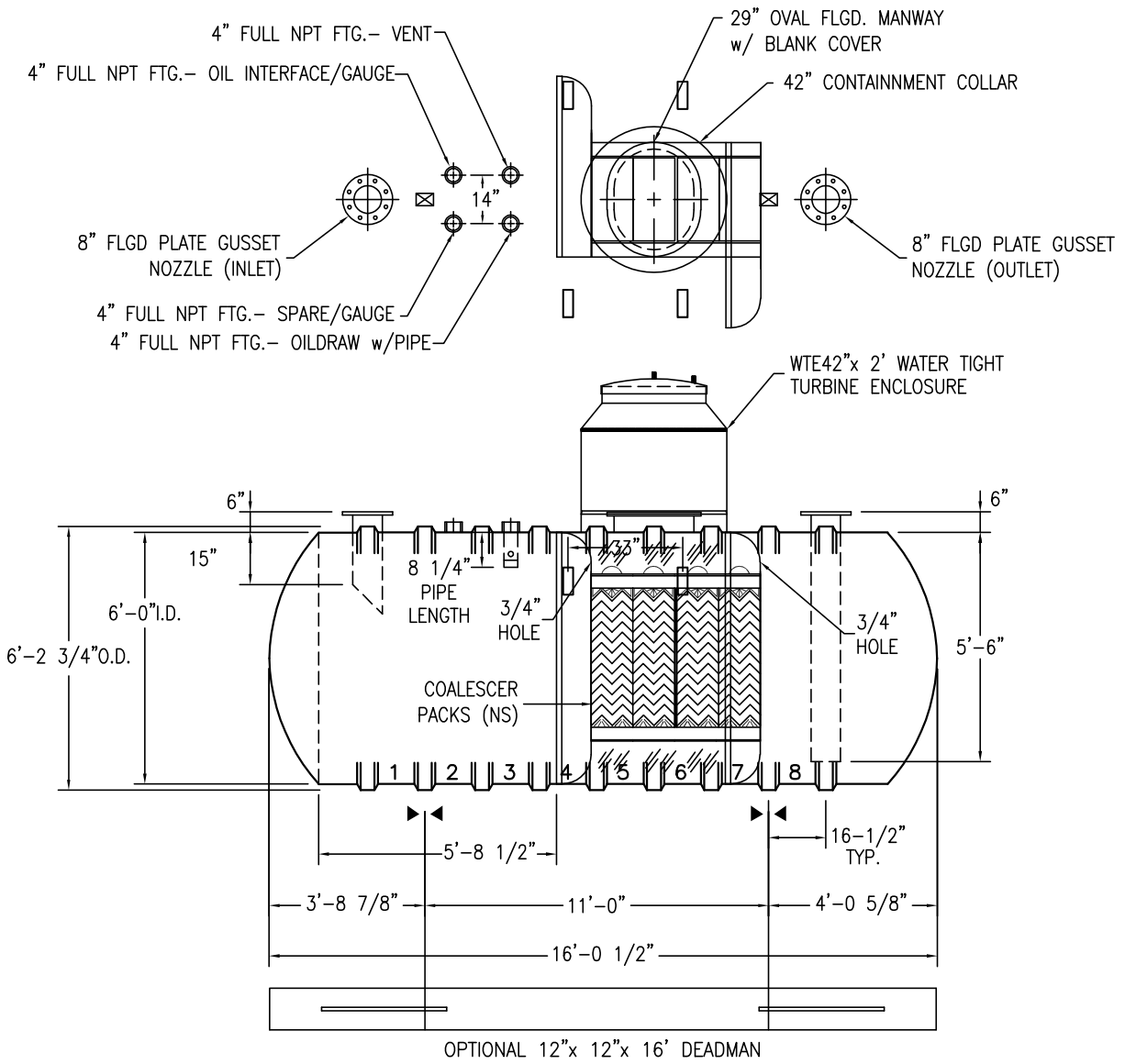



SHELL CODES: 1-E6S09SD, 1-E6SECSO

OWS SPEC #PE-C22.74



- NOTES:**
- ☒ HOLD DOWN STRAP CLIP
 - ▶◀ HOLD DOWN STRAP LOCATION
 - TYPE "13" LIFT LUG - SD
 - TYPE "13" LIFT LUG - HD

SWT (6')-2000 OWS ULCSI-10		DATE: 10/17/05
RYCO CAR WASH SYSTEMS		DRAWN BY: K.A.SOEDER
		REVISD:
		DWG NUMBER: 62SOW-UL
CAPACITY: 3,187	WEIGHT: DRY/WET 2725	