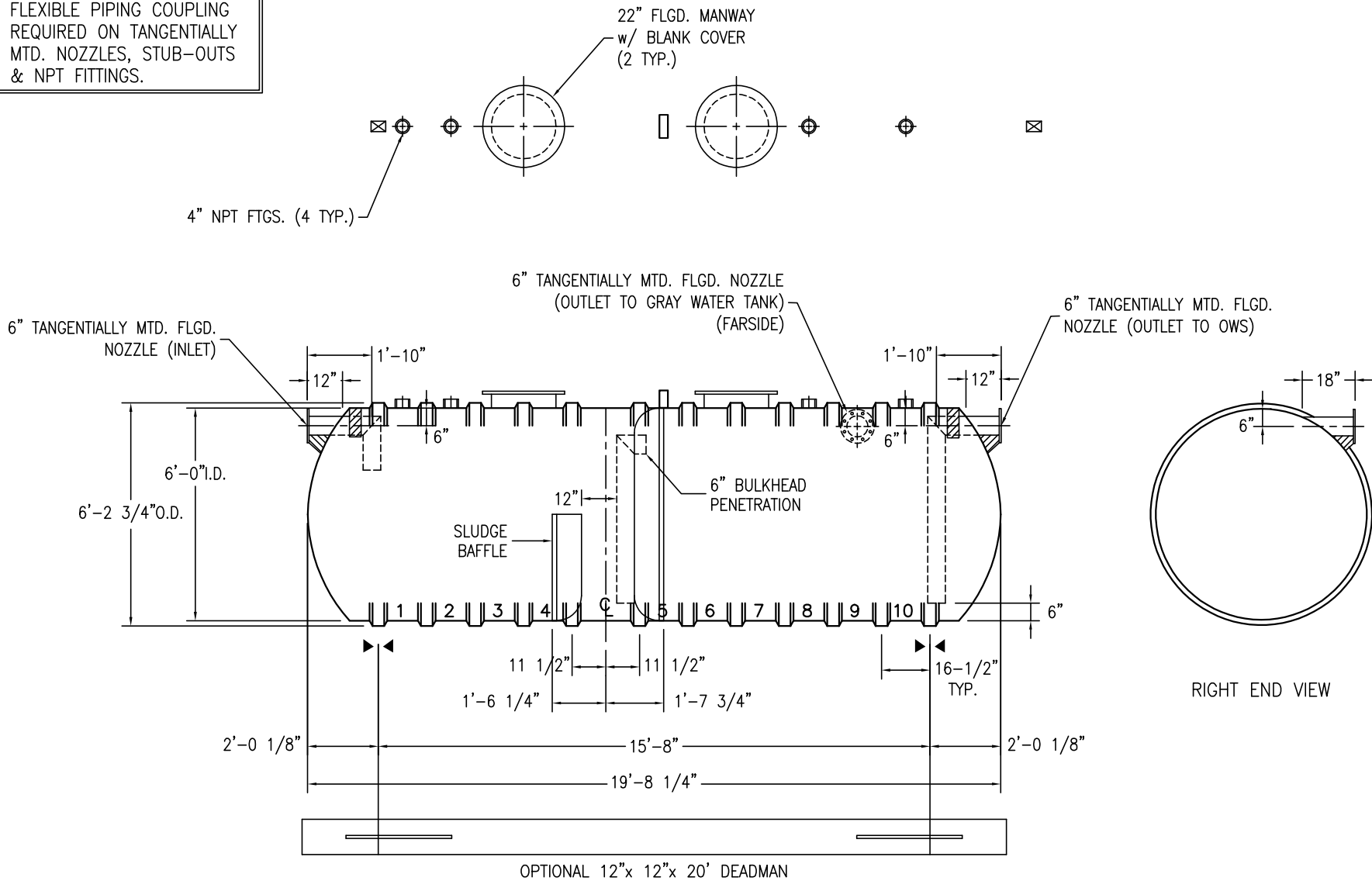



SHELL CODES: 1-E6S07SD
1-E6S05SD

NOTE: CUSTOMER SUPPLIED FLEXIBLE PIPING COUPLING REQUIRED ON TANGENTIALLY MTD. NOZZLES, STUB-OUTS & NPT FITTINGS.



NOTES:

- ☒ HOLD DOWN STRAP CLIP
- ▶◀ HOLD DOWN STRAP LOCATION
- TYPE "13" LIFT LUG - SD
- TYPE "13" LIFT LUG - HD

SWT (6')-4000 CSI-2B INT		DATE:	10/17/05
RYCO CAR WASH SYSTEMS		DRAWN BY:	K.A.SOEDER
		CAPACITY: SLUDGE/TOTAL	110/3958
		WEIGHT: DRY/WET	1350
		REVISED:	
		DWG NUMBER:	64-2BSW